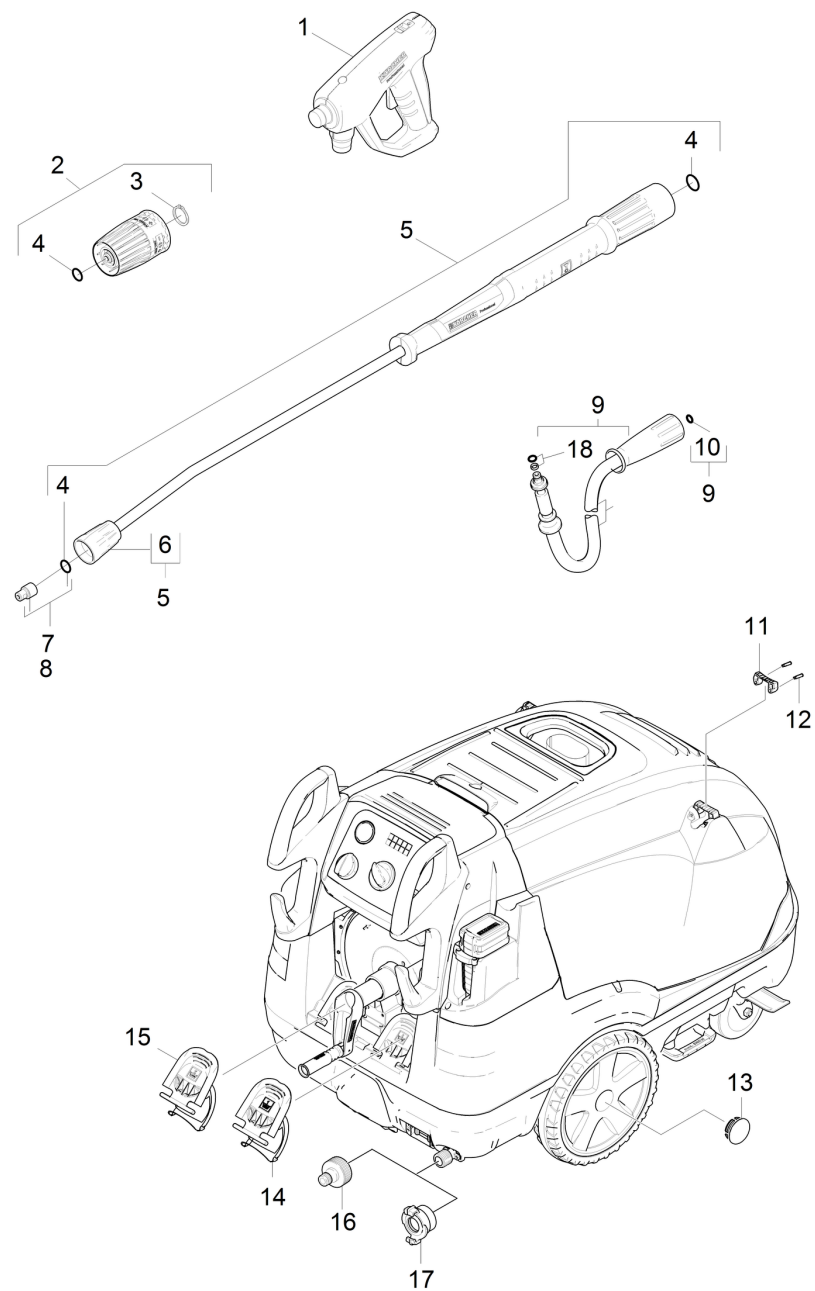


1030 Short spare parts list (1.071-925.3)

Professional \ High pressure cleaner hotwater \ Electric motor \ HDS 12/18-4 SX EU-I \ Short spare parts list

KÄRCHER



1030 Short spare parts list (1.071-925.3)

Professional \ High pressure cleaner hotwater \ Electric motor \ HDS 12/18-4 SX EU-I \ Short spare parts list

KÄRCHER

| POS | Artikelnr | Beschrijving | Aantal | Eenheid |
|-----|-------------|--|--------|---------|
| 1 | 4.118-005.0 | EASY!Force Advanced | 1.000 | ST |
| 2 | 4.118-009.0 | Rotary controller TR 700L | 1.000 | ST |
| 3 | 7.343-069.0 | SPRING CLIP 25x1,2 | 1.000 | ST |
| 4 | 2.880-001.0 | Spare part set seals TR | 3.000 | ST |
| 5 | 4.112-000.0 | Jet pipe TR 1050 mm | 1.000 | ST |
| 6 | 4.112-011.0 | Protection part TR only for replacement | 1.000 | ST |
| 7 | 2.113-028.0 | Power nozzle TR 25070 | 1.000 | ST |
| 8 | 2.114-009.0 | Steam nozzle TR 40085 | 1.000 | ST |
| 9 | 6.110-028.0 | Hose assembly TR rotatable DN8 40MPa 20m | 1.000 | ST |
| 10 | 2.880-154.0 | O-RING SET | 1.000 | ST |
| 11 | 5.424-162.0 | Fixing jet pipe | 1.000 | ST |
| 12 | 5.314-143.0 | Pin fixing jet pipe | 2.000 | ST |
| 13 | 2.889-086.0 | Set wheel cap | 2.000 | ST |
| 14 | 5.064-231.0 | Cover chemistry 2 | 1.000 | ST |
| 15 | 5.064-221.0 | Cover chemistry 1 | 1.000 | ST |
| 16 | 2.640-492.0 | SET Wasseranschluss 1 " | 1.000 | ST |
| 17 | 6.388-458.0 | GEKA KOPPELING 1 | 1.000 | ST |
| 18 | 4.363-691.0 | O-Ring seal kpl. -nur fuer Ersatz- | 1.000 | ST |