

# TECHNICAL DATA SHEET

LENA BOA® Mid ESD S3S No. 746151


Sz. 34 - 42



## LABELLING ACCORDING TO STANDARD

Standard for safety footwear EN ISO 20345:2022 S3S	Basic requirement for S3S: <b>A</b> Antistatic shoe - <b>E</b> Energy absorption in the heel - <b>WPA</b> Water penetration and absorption - <b>S</b> Textile penetration protection - Closed heel area - Basic Slip resistance test on ceramic tile + NaLS (soap solution) - Profiled outsole
Additional requirements	<b>FO FUEL RESISTANCE</b>  <b>SR SLIP RESISTANCE</b> on ceramic tile with glycerine.  <b>SC SCUFF CAP</b> The overcap manages a certain amount of abrasion.

## FORM







Ladies' safety boot 	Form B - in size 38, the upper height must be at least 10.5 cm.
--	---

## FIT

Ladies' fit	The shoe last is ideally tailored to the ergonomics of female feet.
-------------	---

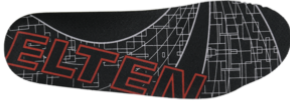
## AREAS OF APPLICATION

Areas of application	Indoors and outdoors Areas where exposure to moisture is expected (S2) Areas where there is a risk of penetration from pointed and sharp objects (S3/S3L/S3S)  Areas where there is a risk of electrostatic discharge (ESDS/ESD)
----------------------	--

FEATURES		
ESD equipment	Thanks to its excellent discharge capability, the shoe is suitable for work in ESD sensitive or electrostatically protected areas (EPA). The shoes comply to the standard 61340-5-1.	
Certification in accordance with DGUV rule 112-191	<ul style="list-style-type: none"> <li>• Certified for orthopaedic modifications / inserts</li> </ul>	
Collar padding	<ul style="list-style-type: none"> <li>• Excellent wearing comfort: the ankle-wrapping, softly padded upper edge provides for stability and grip in the shoe.</li> </ul>	
Reflective material	<ul style="list-style-type: none"> <li>• Good visibility in the dark</li> </ul>	
Heel loop	<ul style="list-style-type: none"> <li>• Quicker into the shoe: The heel loop makes it easier to get inside the shoe</li> </ul>	
BOA® Fit System	Delivering fit solutions purpose-built for performance, the BOA® Fit System is featured in products across industries (including sports, workwear and medical) and consists of three integral parts: a micro adjustable dial, a super-strong lightweight lace and low friction lace guides. Each unique configuration is engineered for fast, effortless, precision fit and is backed by the BOA® Guarantee.	
PU toe protection (polyurethane)	<ul style="list-style-type: none"> <li>• Directly applied tip protection</li> <li>• Excellent wear protection in the shoe tip area</li> <li>• Protects the upper material in this area against premature wear</li> </ul>	
UPPER MATERIAL		
Cowhide leather	<ul style="list-style-type: none"> <li>• Areas of application S1/S2/S3</li> <li>• Natural material</li> <li>• Wear-resistant</li> <li>• Breathable</li> <li>• Water penetration/absorption in accordance with EN ISO 20345 S2</li> </ul>	
LINING		
Fabric lining BIOACTIVE 	<ul style="list-style-type: none"> <li>• Climate-regulating</li> <li>• High breathability</li> <li>• Skin-friendly</li> <li>• High degree of moisture absorption and release</li> </ul>	
Heel pocket lining	<ul style="list-style-type: none"> <li>• The abrasion-resistant microfibre material is particularly sturdy and provides for a pleasant wearing comfort.</li> </ul>	
TOE PROTECTION CAP		
Steel toe cap 	<ul style="list-style-type: none"> <li>• Protection against impacts of min. 200 joules and pressure loading of min. 15 kN</li> <li>• Permanent edge coverage for cushioning</li> <li>• Ergonomically shaped</li> <li>• Comfortable toe room</li> <li>• Good coverage of the little toe area</li> </ul>	

## INLAY SOLE

Full-length inlay sole  
ESD PRO Lady Y



- ESD EQUIPMENT: Protection against electrostatic discharge (ESD). The full-length, exchangeable inlay sole is conductive and designed for the use in ESD safety footwear according to the standards DIN EN ISO 20345 and DIN EN 61340-5-1.
- The inlay sole is individually adapted to the fitting of safety footwear for women.
- The full-length, exchangeable inlay sole provides the highest possible comfort in safety shoes.
- Improvement of the shoe climate thanks to the PU foam's open cell structure. So the foot is always kept comfortably dry.
- The extreme softness of the PU foam absorbs shocks on impact and increases walking comfort.

## PENETRATION RESISTANCE

Metal-free penetration  
protection

The textile midsole complies with the penetration safety standard EN 12568 and furthermore fulfils the additional requirements for penetration protection in accordance with EN ISO 20344 / 20345. The light and flexible material enables an increased elasticity of the shoe, which can particularly be recognized when working on uneven grounds or on your knees.

The textile variant offers 100 % foot coverage compared to steel midsoles (foot coverage 85 % due to limits in the shoe manufacturing process). Being 100 % metal-free and antimagnetic, this equipment is used as penetration protection in safety shoes.

## OUTSOLE

TREKKING LADY double-  
density sole with profile



- Excellent slip resistance
- Antistatic

Outsole: PU (polyurethane)

- Colour: lightgrey
- Profile depth: 4.0 mm
- Abrasion-resistant
- Heat-resistant to approx. 130°C
- Flexible at cold temperatures to approx. -20°C
- Oil and fuel resistant

Midsole: PU (polyurethane)

- The soft PU core provides a good impact absorption and high wearing comfort