

# TECHNICAL DATA SHEET

**MADDOX Air Mesh white Low ESD O1 No. 972560**


**Sz. 36 - 49**



## LABELLING ACCORDING TO STANDARD

Standard for occupational shoes EN ISO 20347:2022 O1	Basic requirement for O1: <b>A</b> Antistatic shoe - <b>E</b> Energy absorption in the heel - Closed heel area
Additional requirements	<b>FO FUEL RESISTANCE</b> <b>SR SLIP RESISTANCE</b> on ceramic tile with glycerine.



## FORM


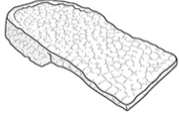

Occupational work shoe 	Form A - in size 42, the upper height must not exceed 11.2 cm.
---	--

## AREAS OF APPLICATION

Areas of application	Dry work areas Areas where there is no risk of falling heavy objects Areas where there is a risk of electrostatic discharge (ESDS/ESD) Workplaces on hard Undergrounds: The revolutionary Infinergy® sole core cushions impacts and provides for a rebound effect when the compressive impulse subsides - for more energy in every step.
----------------------	---

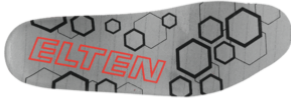
## FEATURES

ESD equipment	Thanks to its excellent discharge capability, the shoe is suitable for work in ESD sensitive or electrostatically protected areas (EPA). The shoes comply to the standard 61340-5-1. 
Sizes (unisex model)	<ul style="list-style-type: none"> <li>Expanded size range: available in sizes 36 - 49</li> </ul>
Certification in accordance with DGUV rule 112-191	<ul style="list-style-type: none"> <li>Certified for orthopaedic inserts</li> </ul> 

<b>FEATURES</b>	
Padded upper edge	<ul style="list-style-type: none"> <li>• Excellent wearing comfort: the padded upper edge protects the Achilles tendon.</li> </ul>
Padded tongue	<ul style="list-style-type: none"> <li>• Excellent wearing comfort: The tongue prevents pressure marks.</li> </ul>
Reflective material	<ul style="list-style-type: none"> <li>• Good visibility in the dark</li> </ul> 
Sole core made of Infinergy® by BASF 	<p>The sole core consists of expanded, thermoplastic polyurethane in the form of oval foam beads. These stick together and are very light and elastic. This revolutionary technology cushions the impact and bounces back extremely well on pressure, so that the energy can be returned to the wearer. Even under low temperatures of -20 °C, the core maintains its high elasticity.</p> 
No metal or leather	<ul style="list-style-type: none"> <li>• Low weight</li> <li>• Suitable for work areas sensitive to metal</li> <li>• Does not trigger metal detectors</li> <li>• Use around induction loops is possible</li> <li>• Suitable for persons allergic to leather</li> </ul>
<b>UPPER MATERIAL</b>	
Microfibre	<ul style="list-style-type: none"> <li>• Synthetic material</li> <li>• Particularly soft</li> <li>• Retains its shape</li> <li>• Tear-resistant</li> <li>• Quick drying</li> <li>• Abrasion-resistant and light</li> </ul>
Mesh material	<ul style="list-style-type: none"> <li>• Areas of application S1</li> <li>• Synthetic material</li> <li>• Retains its shape</li> <li>• Tear-resistant</li> <li>• Quick drying</li> <li>• Abrasion-resistant and light</li> </ul>
<b>LINING</b>	
Breathable fabric lining	<ul style="list-style-type: none"> <li>• Climate-regulating</li> <li>• Good ventilation</li> <li>• Skin-friendly</li> <li>• High absorption and emission of moisture</li> </ul>
Heel pocket lining	<ul style="list-style-type: none"> <li>• The abrasion-resistant microfibre material is particularly sturdy and provides for a pleasant wearing comfort.</li> </ul>

## INLAY SOLE

Full-length inlay sole  
SPORTIVE ESD (rec)



- ESD EQUIPMENT: Protection against electrostatic discharge (ESD). The full-length, exchangeable inlay sole is conductive and designed for the use in ESD safety footwear according to the standards DIN EN ISO 20345 and DIN EN 61340-5-1.
- Inlay sole with recycled material content
- The full-length, exchangeable inlay sole provides the highest possible comfort in safety shoes.
- Improvement of the shoe climate thanks to the PU foam's open cell structure. So the foot is always kept comfortably dry.
- The extreme softness of the PU foam absorbs shocks on impact and increases walking comfort.

## INSOLE

ESD soft-fleece insole

ESD equipment: Protection against electrostatic discharge (ESD), and without using additional means fulfilling a bridge function to the outsole.

- Approximately 50 % lighter than comparable soles made of natural materials
- Flexible and shape-retaining
- Good air permeability
- Excellent wear resistance
- High moisture absorption
- Quick drying (virtually overnight)

## OUTSOLE

MAXXIMO extended  
wedge double-density  
sole



- Excellent slip resistance
- Antistatic

Outsole: TPU (thermoplastic polyurethane)

- Colour: lightgrey
- Profile depth: 3.5 mm
- Particularly abrasion-resistant
- Heat-resistant to approx. 130°C
- Flexible at cold temperatures to approx. -30°C
- Oil and fuel resistant

Midsole: PU (polyurethane) with a core made of Infinergy® by BASF

- The soft PU core provides a good impact absorption and high wearing comfort
- The core made of Infinergy® provides a very good cushioning with rebound effect