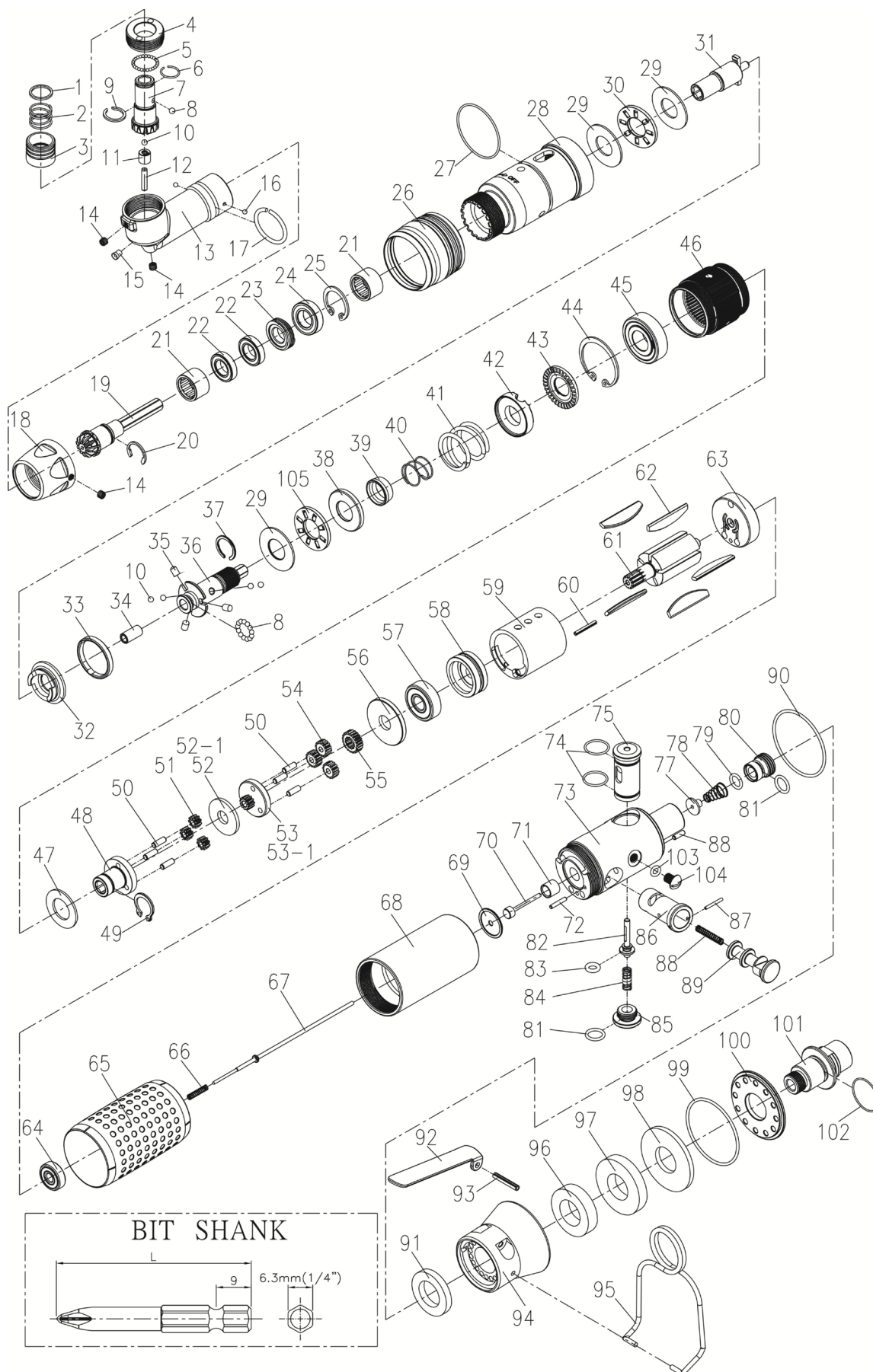


RRI-SA21104

SCREWDRIVER (ANGLE TYPE)

EDITION: A



RRI-SA21104 SCREWDRIVER (ANGLE TYPE)

EDITION: A

| Index No. | Part No. | Description | Q'ty |
|-----------|-----------|-------------------------------------|------|
| 1 | B20S-415 | Spring Washer | 1 |
| 2 | B20S-418 | Spring (Ø10.8 x Ø0.8 x 10.6L) | 1 |
| 3 | B20S-417 | Quick Change Holder | 1 |
| 4 | CS20R-706 | Lock Nut | 1 |
| 5 | 00-3827 | Steel Ball (Ø1/16") | 26 |
| 6 | B20S-428B | Anvil Collar B | 1 |
| 7 | B20R-705 | Spiral Bevel Gear | 1 |
| 8 | 00-3816 | Steel Ball (Ø2.5) | 14 |
| 9 | B20S-428A | Anvil Collar A | 1 |
| 10 | 00-3826 | Steel Ball (Ø3) | 5 |
| 11 | 00-2416 | Needle Bearing (HK0306) | 1 |
| 12 | 00-3454 | Pin (Ø3 x 14L) | 1 |
| 13 | CS20R-701 | Angle Housing | 1 |
| 14 | 00-0605 | Screw (M3 x P0.7 x 3L) | 3 |
| 15 | 00-4603 | Grease Fitting (1/8") | 1 |
| 16 | 00-3828 | Steel Ball (Ø2) | 2 |
| 17 | CS20R-708 | Anvil Collar | 1 |
| 18 | CS20R-702 | Lock Nut | 1 |
| 19 | B20R-704 | Spiral Bevel Gear | 1 |
| 20 | 00-3513 | Snap Ring (C46) | 1 |
| 21 | 00-2415 | Needle Bearing (HK1210) | 2 |
| 22 | 00-2377 | Ball Bearing (Ø17 x Ø9 x 4t) | 2 |
| 23 | CS20R-709 | Lock Nut | 1 |
| 24 | 00-2380 | Ball Bearing (6800Z Ø19 x Ø10 x 5t) | 1 |
| 25 | 00-3117 | Snap Ring (R19) | 1 |
| 26 | B20S-207 | Adjusting Cover | 1 |
| 27 | 00-41222 | O-Ring (Ø25 x Ø2) | 1 |
| 28 | B20R-201 | Clutch Housing | 1 |
| 29 | 00-1516 | Washer (Ø12 x Ø26 x 1t) | 3 |
| 30 | 00-2804 | Roller Bearing (NTB122601) | 2 |
| 31 | B20R-405 | Anvil | 1 |
| 32 | B20S-425 | Clutch Ring | 1 |
| 33 | B20S-424 | Ejector Ring | 1 |
| 34 | 00-6301 | DU Bearing (Ø4 x Ø6 x 6L) | 1 |
| 35 | B20S-426 | Ejector Pin | 3 |
| 36 | B20S-416 | Transmission Shaft | 1 |
| 37 | B20S-428C | Anvil Collar C | 1 |
| 38 | B20S-433 | Spring Seat | 1 |
| 39 | B20S-449 | Control Ring | 1 |
| 40 | B20S-427 | Spring | 1 |
| 41 | B20S-429 | Spring | 1 |
| 42 | B20S-431 | Adjusting Lock Ring | 1 |
| 43 | B20S-430 | Adjusting Nut | 1 |
| 44 | 00-3113 | Snap Ring (R28) | 1 |
| 45 | 00-2305A | Ball Bearing (6001 Ø28 x Ø12 x 8t) | 1 |
| 46 | C20S-440 | Internal Gear | 1 |
| 47 | C20S-441 | Washer | 1 |
| 48 | C20S-442 | Front Gear Cage | 1 |
| 49 | 00-3507 | Snap Ring (S12) | 1 |
| 50 | 00-3424 | Pin (Ø3 x 8L) | 6 |
| 51 | C20S-443A | Planet Gear A | 3 |
| 52-1 | C20S-444B | Washer B (2mm) | 1 |
| 53-1 | C20S-452B | Rear Gear Cage B+ Rear Gear B | 1 |

| Index No. | Part No. | Description | Q'ty |
|-----------|------------|------------------------------------|------|
| 54 | C20S-443B | Planet Gear B | 3 |
| 55 | C20S-447 | Rotor Gear | 1 |
| 56 | C20S-448 | Rear Cover | 1 |
| 57 | 00-2332 | Ball Bearing (608ZZ Ø22 x Ø8 x 7t) | 1 |
| 58 | C20S-301 | Front Plate | 1 |
| 59 | C20S-302 | Cylinder | 1 |
| 60 | 00-3344 | Spring Pin (Ø2 x 16) | 1 |
| 61 | CS20S-303 | Rotor | 1 |
| 62 | C20S-304 | Rotor Blade | 5 |
| 63 | C20S-305 | Rear Plate | 1 |
| 64 | 00-2355 | Ball Bearing (625Z Ø16 x Ø5 x 5t) | 1 |
| 65 | B20S-103 | Housing Rubber | 1 |
| 66 | CS20SL-317 | Spring | 1 |
| 67 | B20SL-314 | Valve Stem | 1 |
| 68 | C20S-101 | Motor Housing | 1 |
| 69 | C20SL-525 | Washer | 1 |
| 70 | CS20SL-527 | Piston | 1 |
| 71 | C20SL-526 | Guide Ring | 1 |
| 72 | 00-3447 | Pin (Ø2 x 12L) | 1 |
| 73 | C20SL-518 | Seat | 1 |
| 74 | 00-41168 | O-Ring (Ø12 x Ø1) | 2 |
| 75 | C20SL-530 | Valve | 1 |
| 76 | 00-3448 | Pin (Ø2.5 x 8L) | 1 |
| 77 | CS20SL-514 | Shut Block | 1 |
| 78 | CS20SL-515 | Spring | 1 |
| 79 | 00-4140 | O-Ring (Ø6.5 x Ø1.5) | 1 |
| 80 | C20SL-531 | Air Inlet Valve | 1 |
| 81 | 00-4141 | O-Ring (Ø8 x Ø1.5) | 2 |
| 82 | C20SL-510 | Pin | 1 |
| 83 | 00-41172 | O-Ring (Ø4 x Ø2) | 1 |
| 84 | C20SL-507 | Spring | 1 |
| 85 | 216-030 | Screw Cap | 1 |
| 86 | C20S-501 | Valve Sleeve | 1 |
| 87 | 00-3367 | Spring Pin (Ø1.5 x 12L) | 1 |
| 88 | C20S-528 | Spring (Ø0.4 x Ø3.5 x 19L) | 1 |
| 89 | C20S-502 | Reverse Valve | 1 |
| 90 | 00-41223 | O-Ring (Ø31 x 1) | 1 |
| 91 | C20S-601 | Muffler | 1 |
| 92 | C20SL-504 | Trigger | 1 |
| 93 | 00-3308 | Spring Pin (Ø3 x 18L) | 1 |
| 94 | B20SL-603 | Exhaust Deflector | 1 |
| 95 | B20S-102 | Hanger | 1 |
| 96 | B20S-601A | Muffler | 1 |
| 97 | B20S-601B | Muffler | 1 |
| 98 | B20S-601C | Muffler | 1 |
| 99 | 00-41224 | O-Ring (Ø38 x Ø41 x Ø1.5) | 1 |
| 100 | B20S-608 | Deflector Cap | 1 |
| 101 | B20S-604B | Air Inlet (1/4" PT-19) | 1 |
| 102 | 00-41175 | O-Ring (Ø13 x Ø16 x Ø1.5) | 1 |
| 103 | 00-41156 | O-Ring (Ø3.5 x Ø1.5) | 1 |
| 104 | 00-1304 | Screw (M5 x 6L) | 1 |
| 105 | B20S-412 | Seat | 1 |