

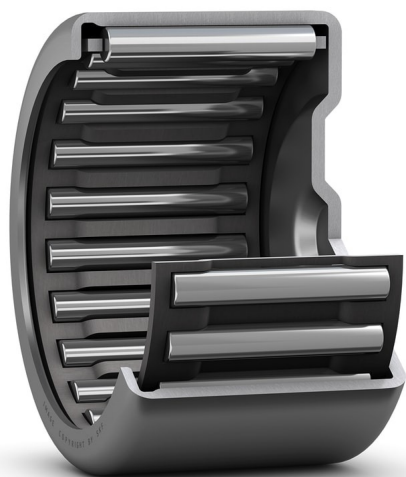
BK 1212 Drawn cup needle roller bearing with a closed end

bearing with a closed end

Drawn cup needle roller bearing with a closed end

Drawn cup needle roller bearings are typically used in applications where the housing bore cannot be used as a raceway for a needle roller and cage assembly, but where a very compact and economical bearing arrangement is required. Owing to the large number of rollers, the bearings have a high load carrying capacity and stiffness. The closed end makes them suitable for bearing arrangements where they are situated at the end of a shaft.

- High radial load carrying capacity
- Accommodate small axial guidance forces
- High stiffness
- Very low cross-sectional height



Overview

Dimensions

Bore diameter of needle roller complement	12 mm
Outside diameter	18 mm
Width	12 mm

Performance

Basic dynamic load rating	6.27 kN
Basic static load rating	7.35 kN
Reference speed	16 000 r/min
Limiting speed	18 000 r/min

Properties

Bearing part	Bearing without inner ring
Number of rows	1
Outer ring type	Drawn cup with one closed end
Aligning feature	Without
Cage	Sheet steel
Number of flanges, outer ring	2
Tolerance class	Normal
Material, bearing	Bearing steel
Coating	Without
Sealing	Without
Lubricant	None
Relubrication feature	Without

Technical Specification



Dimensions

F_w	12 mm	Diameter under rollers
D	18 mm	Outside diameter
C	12 mm	Width
C_1	min. 9.3 mm	Depth of the drawn cup BK
r	min. 0.8 mm	Chamfer dimension drawn cup (outer ring)

Calculation data

Basic dynamic load rating	C	6.27 kN
Basic static load rating	C_0	7.35 kN
Fatigue load limit	P_u	0.85 kN
Reference speed		16 000 r/min
Limiting speed		18 000 r/min

Mass

Mass bearing	0.01 kg
--------------	---------

Associated products

Inner ring IR series	IR 8x12x12.5
Inner ring LR series	LR 8x12x12.5
Radial shaft seal with a low cross-sectional height, single lip	G 12x18x3
Radial shaft seal with a low cross-sectional height, double lip	SD 12x18x3

Terms and conditions

By accessing and using this website / app owned and published by AB SKF (publ.) (556007-3495 · Gothenburg) ("SKF"), you agree to the following terms and conditions:

Warranty Disclaimer and Limitation of Liability

Although every care has been taken to assure the accuracy of the information on this website / app, SKF provides this information "AS IS" and DISCLAIMS ALL WARRANTIES, EXPRESS OR IMPLIED, INCLUDING, BUT NOT LIMITED TO, IMPLIED WARRANTIES OF MERCHANTABILITY AND FITNESS FOR A PARTICULAR PURPOSE. You acknowledge that your use of this website / app is at your sole risk, that you assume full responsibility for all costs associated with use of this website / app, and that SKF shall not be liable for any direct, incidental, consequential, or indirect damages of any kind arising out of your access to, or use of the information or software made available on this website / app. Any warranties and representations in this website / app for SKF products or services that you purchase or use will be subject to the agreed upon terms and conditions in the contract for such product or service. Further, for non-SKF websites / apps that are referenced in our website / app or where a hyperlink appears, SKF makes no warranties concerning the accuracy or reliability of the information in these websites / apps and assumes no responsibility for material created or published by third parties contained therein. In addition, SKF does not warrant that this website / app or these other linked websites / apps are free from viruses or other harmful elements.

Third Party Services

When viewing YouTube content via the SKF website(s) (i.e. using YouTube API Services), you agree to be bound by the YouTube Terms of Service.

Copyright

Copyright in this website / app copyright of the information and software made available on this website / app rest with SKF or its licensors. All rights are reserved. All licensed material will reference the licensor that has granted SKF the right to use the material. The information and software made available on this website / app may not be reproduced, duplicated, copied, transferred, distributed, stored, modified, downloaded or otherwise exploited for any commercial use without the prior written approval of SKF. However, it may be reproduced, stored and downloaded for use by individuals without prior written approval of SKF. Under no circumstances may this information or software be supplied to third parties.

This website /app includes certain images used under license from Shutterstock, Inc.

Trademarks and Patents

All trademarks, brand names, and corporate logos displayed on the website / app are the property of SKF or its licensors, and may not be used in any way without prior written approval by SKF. All licensed trademarks published on this website / app reference the licensor that has granted SKF the right to use the trademark. Access to this website / app does not grant to the user any license under any patents owned by or licensed to SKF.

Changes

SKF reserves the right to make changes or additions to this website / app at any time.