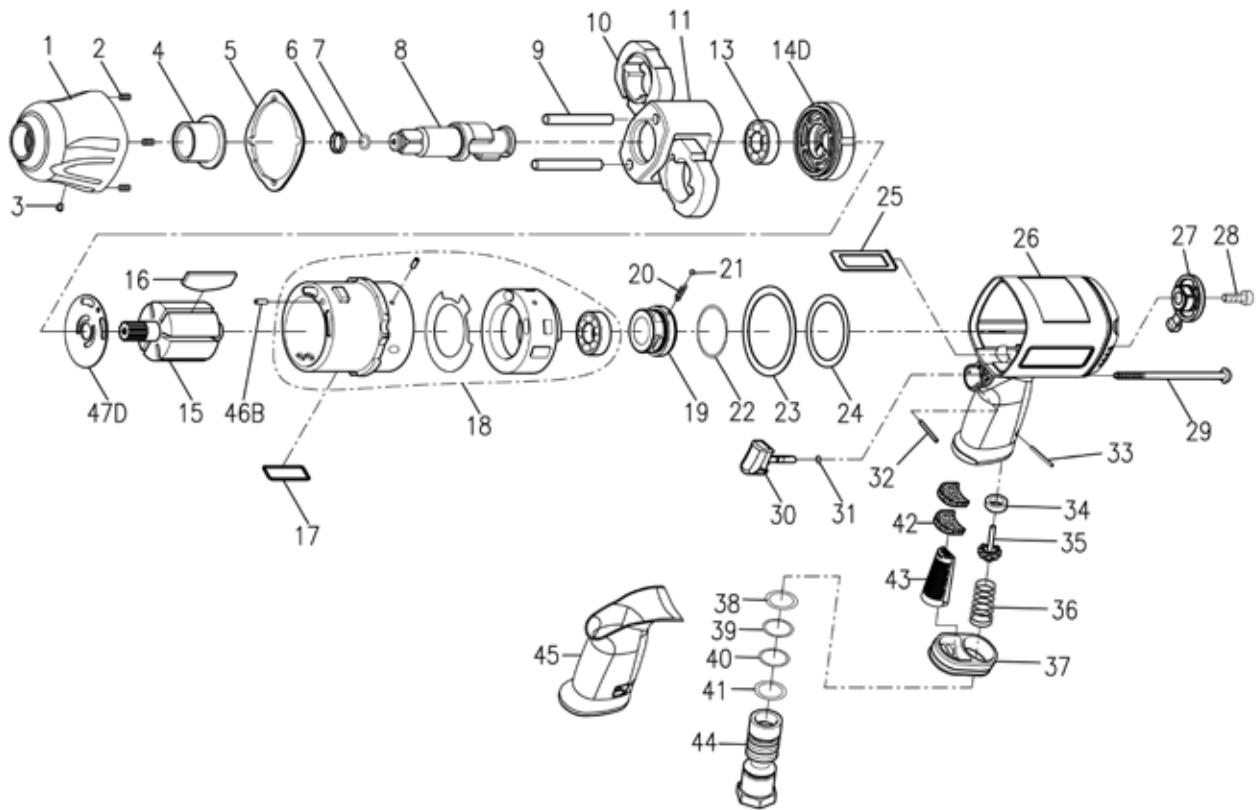


RRI-21 1/2" IMPACT WRENCH

VERSIE 4.0



Index No.	Part No.	Description	Q'ty
1	307B-002	Hammer Case	1
2	00-4302	Inserts Recoil (M5)	4
3	00-4603	Grease Fitting (1/8")	1
4	305N-010	Anvil Bushing	1
5	305M-020	Front Gasket	1
6	250-033	Anvil Collar	1
7	00-4103	O-Ring (P7)	1
8	307B-011NA4	Anvil	1
	305V-011NB4	Anvil 150 mm	option
9	305N-016	Hammer Pin	2
10	305V-017	Hammer	2
11	305N-012	Hammer Cage	1
13	00-2313	Ball Bearing (6002)	1
14D	307B-005-C	Front End Plate	1
15	305N-007N	Rotor	1
16	305N-008D	Rotor Blade	6
17	305H-041	Square Ring	1
18	305N-006B	Cylinder	1
	305F-033-B	Valve Sleeve Gasket	1
	305H-029C	Valve Sleeve	1
	00-2305	Ball Bearing (6001)	1
	00-3355	Spring Pin (Ø3 x 5L)	1
19	305Q-021	Regulator	1
20	305F-034B	Spring	1
21	00-3805	Steel Ball (1/8")	1
22	00-4174	O-Ring (Ø31 x Ø1.5)	1
23	305F-030	Rear Gasket	1

Index No.	Part No.	Description	Q'ty
24	305F-031	Washer	1
25	305F-019	Air Channel Gasket	1
26	307B-001	Motor Housing	1
27	305V-022	Regulator Knob	1
28	00-6204	Cap Screw (M5 x 6L)	1
29	307B-028	Screw (M5)	4
30	305H-024	Trigger	1
31	00-4101	O-Ring (Ø3 x Ø1)	1
32	00-3335	Spring Pin (Ø2 x 22L)	1
33	00-3308	Spring Pin (Ø3 x 18L)	1
34	306-027-B	Bushing	1
35	306-026	Valve Stem	1
36	305F-026-B	Spring	1
37	305-021	Exhaust Deflector	1
38	00-4126	O-Ring (P16)	1
39	00-4143	O-Ring (Ø17 x Ø1.5)	1
40	00-4127	O-Ring (Ø17,17 x Ø1,78)	1
41	305F-032	Washer	1
42	305V-027	Muffler	2
43	305F-042	Muffler	1
44	305J-025A	Air Inlet (1/4" PF)	1
	305J-025B	Air Inlet (1/4" PT)	
	305J-025C	Air Inlet (1/4" NPT)	
45	307B-036	Handle Rubber	1
46B	00-3435	Pin (Ø3 x 8.7L)	1
47D	305T-020	Front End Washer	1